

A LIVING GUIDE TO LOCAL DISCOVERY

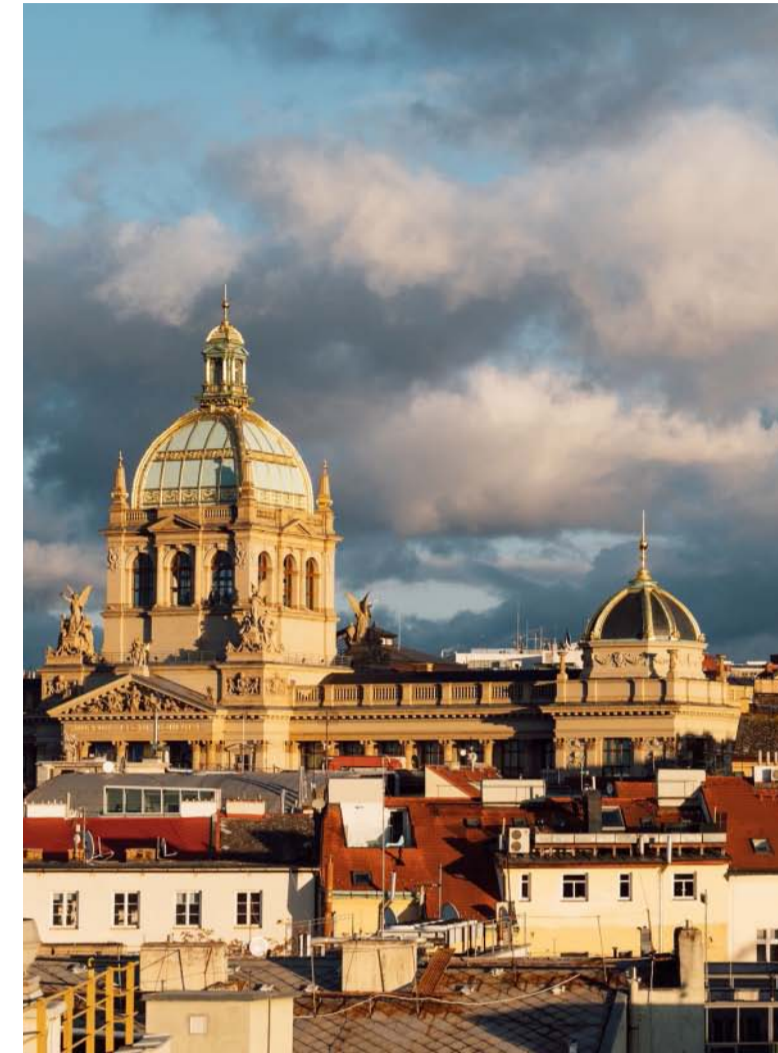
ALMANAC X

A L C R O N P R A G U E

FOUND IN ALMANAC X

ALMANAC X WAS CREATED AS A LIVING, BREATHING GUIDE TO THE CITY. TO KNOW A PLACE, YOU HAVE TO TASTE IT, FEEL IT, CONNECT TO IT. DRINK IT IN WITH ALL YOUR SENSES. APPRECIATE THE HISTORY, AND BE INSPIRED BY THE NOW. DISCOVER YOUR OWN STORY IN BETWEEN. THIS IS WHAT IT MEANS TO TRAVEL.

THIS IS WHAT IS
FOUND IN ALMANAC X.

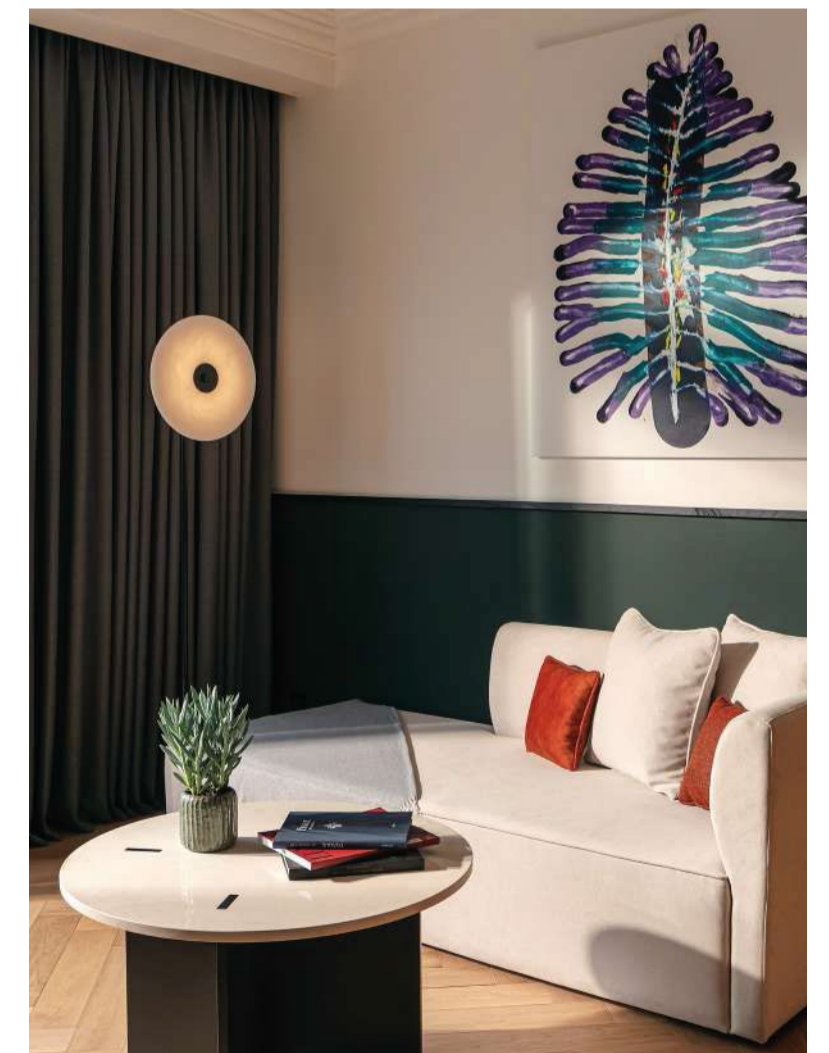


ALMANAC HOTELS

More than a place to stay, Almanac Hotels are a collection of dynamic experiences meant to indulge in the traveler's every sense through curated design and thoughtful, personal details. We put guests in touch with the inspiring local culture and community in a way that lets them find their own personal stories and memorable connections in the places they travel to. Found in Almanac Barcelona, Vienna and Prague!

ALMANAC X HOTELS

Almanac X is a chic place to stay and be. A collection of tempting nourishing experiences meant to pamper a traveler's 'eye and tasting senses through innovative, contemporary delicacies and treats. We put our guests from near and far in touch with a modern interpretation of the local cuisine to create lasting impressions and connections. Found in Almanac X!



PRAGUE AT A GLANCE

LOCATION

The luxury lifestyle hotel Almanac X Alcron Prague - the chic place to stay and be, just a few steps from the historic Wenceslas Square and Old Town, with an epicurean focus, authentic cuisine, unique design, and stunning rooftop views. The perfect base for living in your Prague story.

ACCOMMODATION

204 Rooms & Suites with room sizes ranging from 26 - 40 sqm and suite sizes ranging from 40 - 85 sqm in the Presidential Suite.

EVENT FACILITIES

544 sqm of conference and event space with venues for 10 to 200 people.

RESTAURANT & BARS

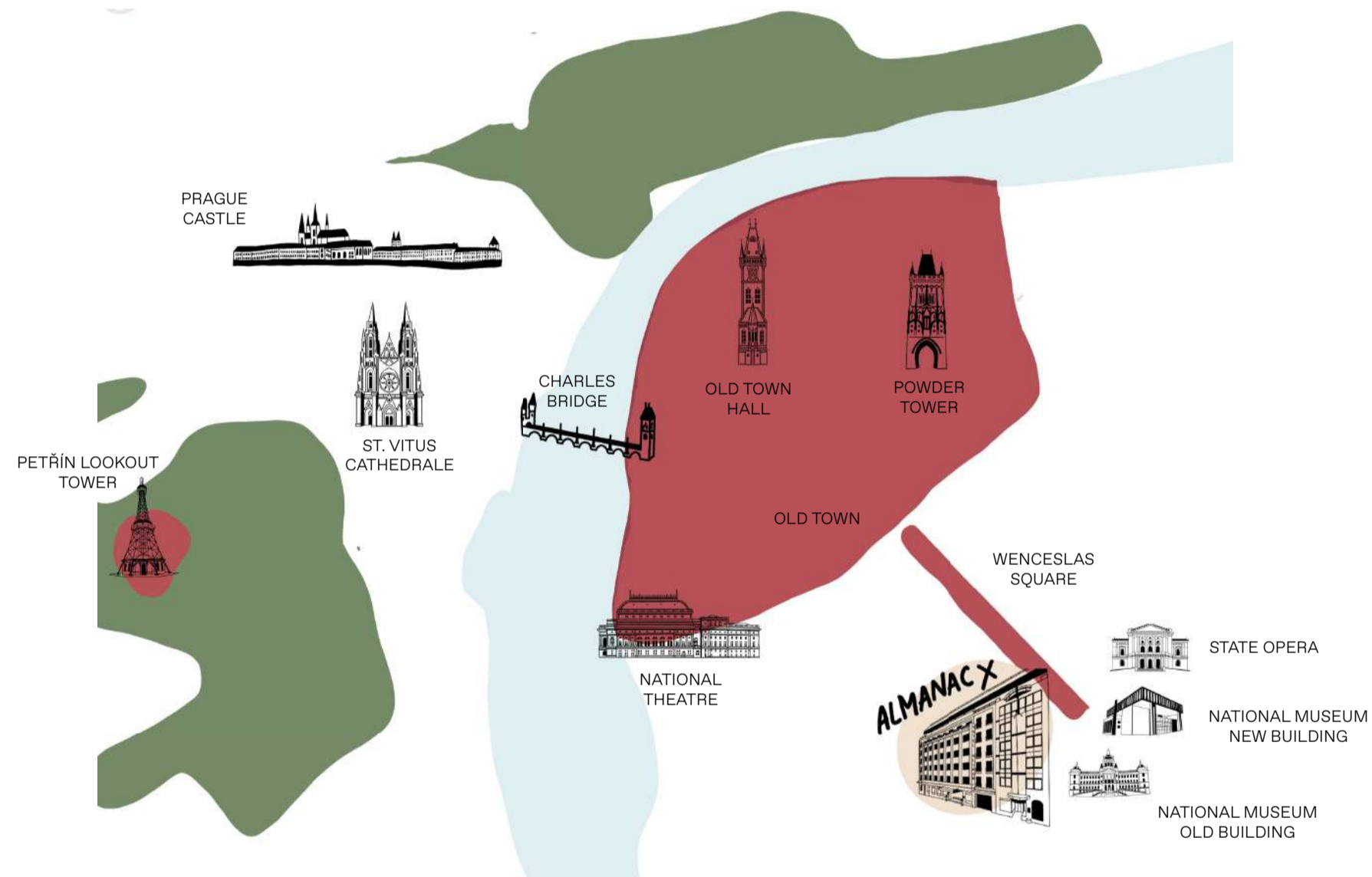
A culinary journey of innovative, contemporary delicacies and treats presented throughout the entire hotel. Alcron Restaurant that celebrates local produce in a modern interpretation, art-de-co inspired cocktail bar, specialty coffee shop with nutritionists' approach, and rooftop terrace with views of Prague castle, which will be open for guests in 2025.

ALMANAC X WELLNESS

Fully equipped gym with sauna and treatment room.



LOCATION



From Almanac X Alcron Prague walk through the streets visiting Prague's famous Modernits buildings or discover the local artisan's shops at shopping street.

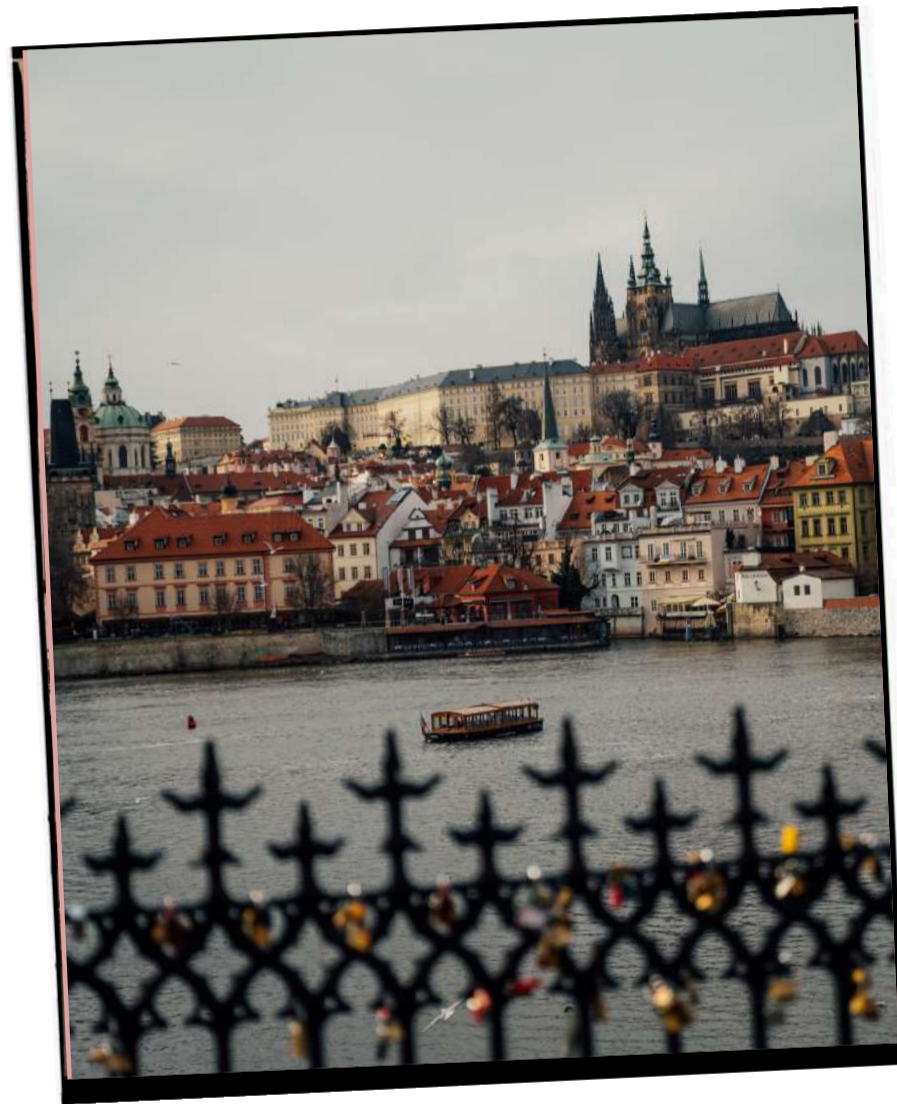
SURROUNDING



A DAY IN



08:30 BREAKFAST



11:03 EXPLORE PRAGUE



14:21 HAVE A DRINK



22:00 TAKE A REST

PRAGUE

ELIAS COFFEE SHOP



Elias Coffee shop at Almanac X Alcron Prague brings a breath of fresh inspiration. Locally roasted coffee, seasonal tea, and mocktails. Nutritionally balanced Plant-forward menu focusing on diverse needs, such as: thinking – energizing –defending –recovering –chilling.

COFFEE SHOP





- ESPRESSO
- CAPPUCCINO
- FLAT WHITE
- LATTE
- SIGNATURE DRINKS
- BATCH BREW
- CHAI LATTE
- MATCHA LATTE
- CHEMEX
- V60
- HOT CHOCOLATE
- TEAS
- LEMONADE
- JUICES
- KOMBUCHA



RESTAURANT



Be inspired by elevated innovative plant-forward cuisine celebrating local produce and the culinary heritage of Central Europe and the hotel itself. Fresh modern design proudly pairs with its historical features, including heritage crystal chandeliers.





BAR



Sip craft cocktails while taking in a modern vibe at one of the coolest bars in Prague. Let the good times roll with professional cocktails and drinks in a unique and intimate setting.

ALCRON BAR





ROOFTOP

COMING IN 2025



Soak in the sunset views from our Prague rooftop. Winter or summer, day or night, this is the place to be for unmatched vistas of one of the world's most beautiful cities. Take in the sight of Prague Castle, the Czech National Museum and Prague's many churches and elegant tiled rooftops.

ALCRON ROOFTOP







02
ROOMS

SLEEP LATE TAKE YOUR TIME

Indulge in a good night's rest with
rooms designed for maximum
tranquility amidst the busy city.



SLEEP OVER



Our rooms come in various shapes and sizes suitable for every need - a staycation with friends, a getaway with your family or a place to work. Find the style and size that suits you.



ROOM SIZES

	ROOMS	SQM/SQFT
SUPERIOR ROOMS		
ALMANAC X ROOM	108	26/280
ALMANAC X ROOM WITH BALCONY	9	26/280
DELUXE ROOM	61	30/323
ALMANAC X JUNIOR SUITES		
JUNIOR SUITE	13	40/431
ALMANAC X SUITES		
EXECUTIVE SUITE	5	46/495
EXECUTIVE SUITE WITH BALCONY	4	43/463
ALMANAC X CASTLE VIEW SUITE	3	43/463
PRESIDENTIAL SUITE	1	85/915





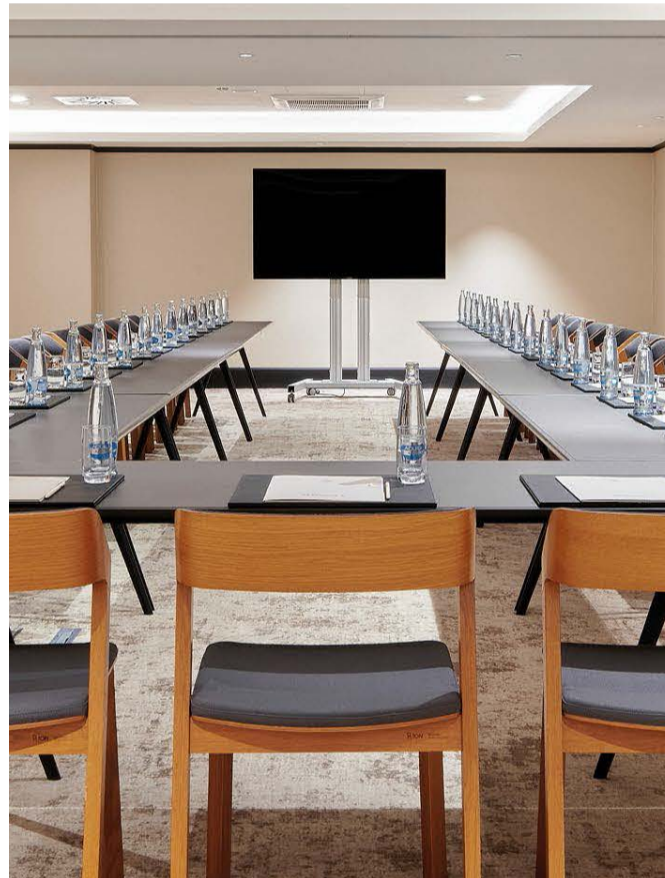
HOST & BE HOSTED



Energize with spaces for collaboration and celebration - a business meeting of the minds, a reunion of old friend or a wedding party you will remember forever.



MEETING & EVENT SPACES



Find your story in Almanac X Alcron Prague with inspiring spaces designed for mindful business meetings, legendary reunions, and parties to remember forever. 9 fresh and stylish meeting rooms in the heart of the city that sparked creativity and connections for centuries.

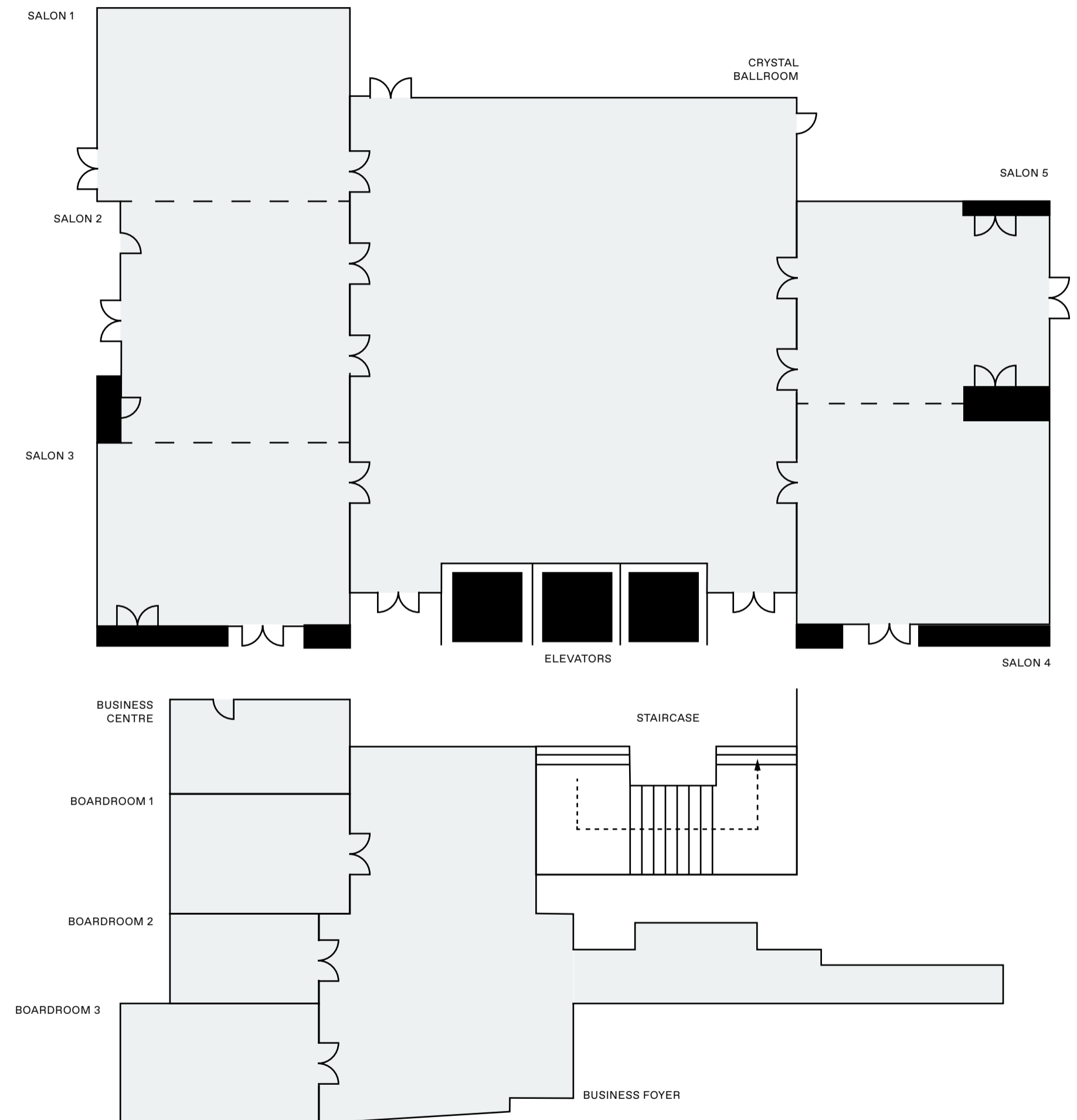


MEETING & EVENT SPACES



From our iconic Crystal Ballroom under a glass atrium roof with adjoining meeting rooms and space of total 544 m² to the Alcron restaurant or bar, the choice for impressing is yours.

FOR ENQUIRIES PLEASE CONTACT:
MEETINGS.PRAGUE@ALMANACHOTELS.COM



FACTS & FIGURES

ROOM	SQM	HEIGHT (M)	ROOM DIM. (M)	MAX CAPACITY	BOARD-ROOM	THEATER	CLASS-ROOM	U-SHAPE	BANQUET	COCKTAIL	CABARET
CRYSTAL BALLROOM	215	4.1	15x15	200	45	200	120	45	130	200	80
BOARDROOM 1	22	2.2	6x4	10	10	-	-	-	-	-	-
BOARDROOM 2	12	2.2	4x3	6	6	-	-	-	-	-	-
BOARDROOM 3	22	2.2	4x6	10	10	-	-	-	-	-	-
SALON 1	60	2.2	8x8	42	24	42	30	21	28	40	22
SALON 2	41	2.2	7x6	30	18	30	24	19	20	30	16
SALON 3	60	2.2	8x8	42	24	42	30	21	28	40	22
SALON 4	56	2.2	7x8	42	24	42	30	21	28	40	22
SALON 5	56	2.2	7x8	42	24	42	30	21	28	40	22
SALON 1+2	105	2.2	13x8	72	32	72	36	32	40	70	32
SALON 2+3	105	2.2	8x13	72	32	72	36	32	40	70	32
SALON 1+2+3	165	2.2	8x21	110	42	90	54	42	60	110	48
SALON 4+5	112	2.2	8x14	80	32	72	36	32	40	80	32
BUSINESS FOYER	70	2.2	10x7	150	-	-	-	-	-	150	-
INDOOR ROOFTOP	115	2.5	17x7	80	-	-	-	-	50	80	-
OUTDOOR ROOFTOP	97	2.5	23x5	50	-	-	-	-	36	50	-

All our meeting & event spaces offer complimentary Wi-Fi, are air conditioned and can be blacked out.



WORK OUT



Find everything you need for your personal training regime. A fully equipped modern fitness centre is open 24 hours a day for your convenience and includes a sauna exclusively for our hotel guests.

Enjoy total relaxation and refreshment with signature treatments and massages after your workout or long walks around Prague.



05

THE ALMANAC EXPERIENCE

MEET NEIGHBOURS

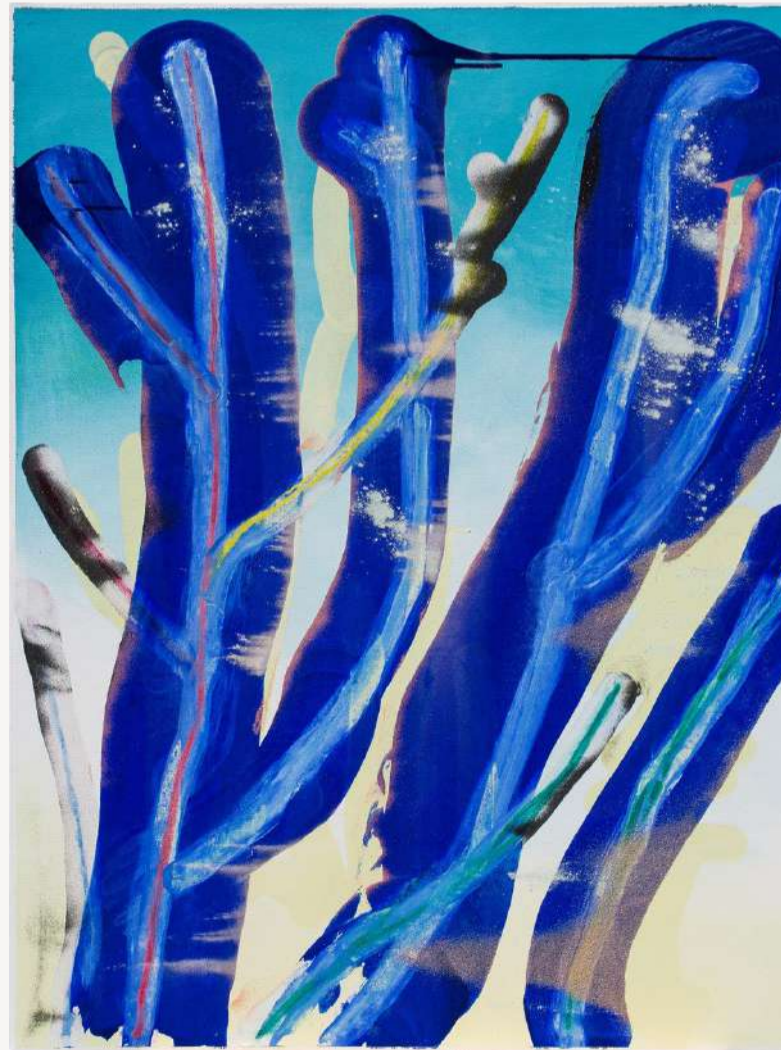


Take in the culture that surrounds Almanac X – world-class museums, shopping and local flavors all within walking distance.

THE AREA

GET INSPIRED

Admire the art and creativity brought to Almanac by local artists and creators. New partnerships happen each month.



PATRIK KRISSAK

ART



LUCIE JINDRÁK SKŘIVÁNKOVÁ



ALŽBĚTA JOSEFY

CONTACT ALMANAC X

SAY AHOJ

We can't wait for you to experience
Almanac X Alcron Prague for yourself.

ALMANAC X ALCRON PRAGUE

ŠTĚPÁNSKÁ 623/40,
110 00 PRAHA, CZECH REPUBLIC

E: RECEPTION.PRAGUE@ALMANACHOTELS.COM
T: +420 222 820 000

FOLLOW US

@ALMANACXPRAGUE
@ALCRONPRAGUE

[ALMANACHOTELS.COM/PRAGUEX](https://almanachotels.com/pragutex)

FACTS

ACCOMMODATION

- 204 Rooms & Suites (178 Rooms, 26 Suites)
- Room size ranging from 26 - 30 m2
- Suite size ranging from 40 - 85 m2
- Selected suites feature a stunning view of the Prague castle
- Exceptional connecting rooms
- Complimentary Wi-Fi throughout the entire hotel
- Mini bar with complimentary refreshments inspired by the Prague market culture
- Coffee machine with Almanac X coffee

FEATURES AND SERVICES

- Luxury lifestyle hotel located in the heart of the city, in walking distance to shopping area, bars, restaurants, recreational area and most sought-after sights
- Locally inspired restaurant and bar
- Elias Coffee shop with fair trade coffee and nutritional food
- Treatment room & sauna
- Fully equipped fitness room
- Inspired communal spaces filled with local art
- 9 meeting rooms for 10 - 200 guests
- Impressive Crystal Ballroom with transparent cupola ceiling with an abundance of natural daylight
- Tailor-made local experiences throughout the city specifically for Almanac guests

ARRIVAL & PARKING

- 30 minute taxi ride from Prague Airport
- 5 minute taxi ride from Prague Main Train Station
- On-site parking available
- Closest Subway station Metro A, B Mustek or Metro C Muzeum 200m walking distance.

	CAPACITY	
RESTAURANT, BAR, RECEPTION		
RESTAURANT	100	
BAR	80	
	SQM/SQFT	
WELLNESS FACILITIES		
FITNESS ROOM & WELLNESS AREA	400/4306	
MEETINGS EVENTS		
MEETING & EVENT ROOMS 2ND FLOOR	215/2314	
BREAKOUT AND PRE-FUNCTION AREAS	333/3584	
SUPERIOR ROOMS		
ALMANAC X ROOM	108	26/280
ALMANAC X ROOM WITH BALCONY	9	26/280
ALMANAC X JUNIOR SUITES		
JUNIOR SUITE	13	40/431
ALMANAC X SUITES		
EXECUTIVE SUITE	5	46/495
EXECUTIVE SUITE WITH BALCONY	5	43/463
ALMANAC X CASTLE VIEW SUITE	3	43/463
PRESIDENTIAL SUITE	1	85/915

INFO & CONTACT

ALMANACHOTELS.COM/PRAGUEX
RECEPTION.PRAGUE@ALMANACHOTELS.COM